

2016

2017 12 1

			13703714068 583752989@qq.com
<input type="checkbox"/> <input checked="" type="checkbox"/>			
			11
			0371-69691438 henanditan@126.com
/	2017 11 12		
/	2017 12 1		
			/

	182790	181508
	182790	181508

- 2016

- 2016

	2016
tCO ₂	110878
tCO ₂	1282
tCO ₂	70630
tCO ₂	182790

- 2016

-	2016	2015	
-	2016		
		李响	2017 11 28
		盛翠玲	2017 11 30
		张明	2017 12 1

1.	1
1.1	1
1.2	1
1.3	2
2.	3
2.1	3
2.2	3
2.3	4
2.4	5
3.	5
3.1	5
3.2	9
3.2.1	9
3.2.2	10
3.3	11
3.4	11
3.4.1	11
3.4.2	14
3.4.3	19
3.4.4	20
3.5	25

3.6	25
4.	25
5.	27
1	27
2	27
3	27

1.

1.1

” 2017 [2016]57 “57
2017 504

“CTC”

“ ” 2016

-

-

-

1.2

- 2016

1

- 2016

1.3

-

[2016]57

-

2016 5 13

-

-

“ ”

-

2.

2.1

CTC

2-1

1			2016
2			
3			2016

2.2

2016

2017

11 11

3“

”

2.3

2017 11 11 12

2-2

2017 11 11 12				CTC
				/

2.4

2017

11 30

CTC

CTC

1

CTC

3.

3.1

3.1.1

91411100758369688R

2221

2004

600069

55160

12430

2016

85656

1200

120

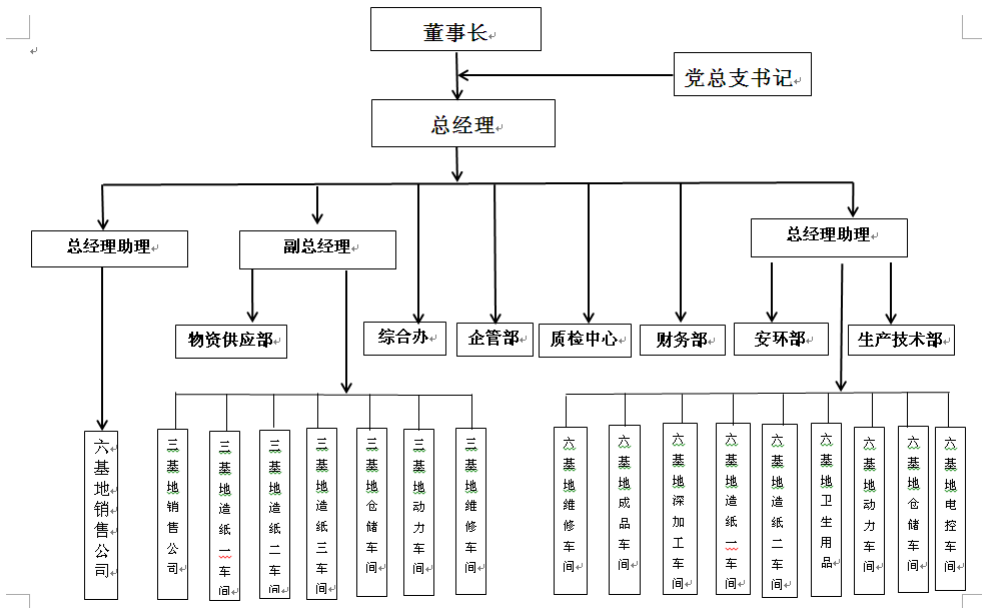
1170

2

5500mm

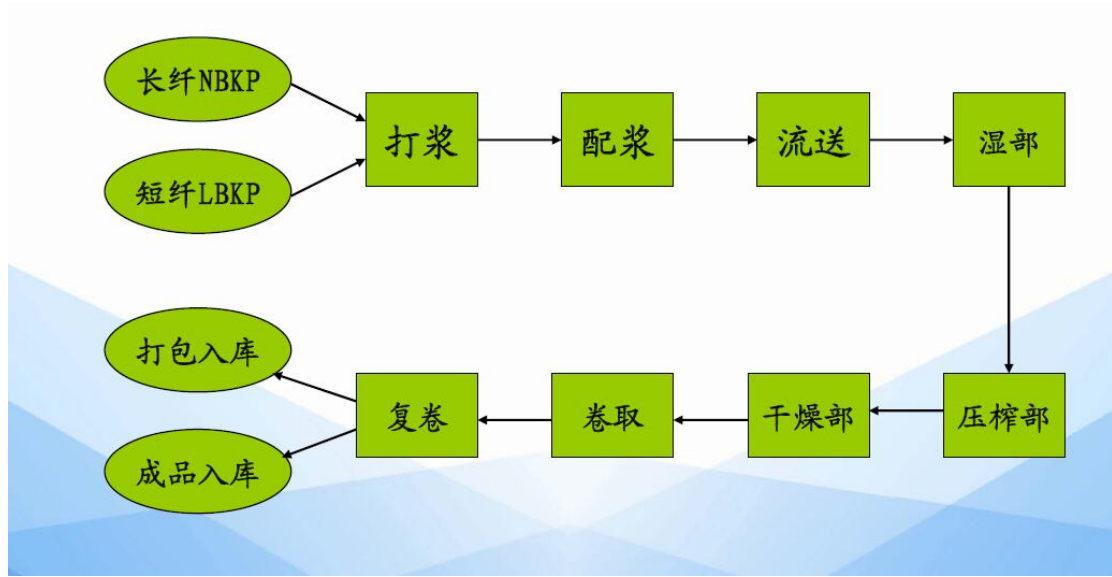
2000m/min

10



3-1

3.1.2



3-1

3.1.3

3-1

3-1

1		2670	1	
2		2850	1	
3		2850	1	
4		1880	1	
5	1#	SHF20-2.5-W	1	
6	2#	SHF15-2.5-A	1	

7		5550	1	
8		5550	1	
9	1#	ZG-35/5.29-M	1	
10	2#	ZG-35/5.29-M	1	

3.1.4

2016-2017

2017

2016-

2016

3-2 2016

		2016
		85656
2016		128562

3.2

3.2.1

2016

2015

3.2.2

3-3

	/	

--	--	--

3.3

2016

3.4

3.4.1

3.4.1.1

	2016

		2016
	t	55353.61

3.4.1.2

	19.570
	2 1
:	

3.4.1.3

	2016

	2016																																										
	<table border="1"> <tr><td></td><td></td><td>2016</td></tr> <tr><td>1</td><td>7436</td><td>7436</td></tr> <tr><td>2</td><td>6871</td><td>6871</td></tr> <tr><td>3</td><td>6381</td><td>6381</td></tr> <tr><td>4</td><td>6642</td><td>6642</td></tr> <tr><td>5</td><td>5116</td><td>5116</td></tr> <tr><td>6</td><td>9595.4671</td><td>9595.4671</td></tr> <tr><td>7</td><td>2822</td><td>2822</td></tr> <tr><td>8</td><td>3847</td><td>3847</td></tr> <tr><td>9</td><td>10098.5603</td><td>10098.5603</td></tr> <tr><td>10</td><td>7707</td><td>7707</td></tr> <tr><td>11</td><td>3083</td><td>3083</td></tr> <tr><td>12</td><td>9524</td><td>9524</td></tr> <tr><td></td><td>79123.0274</td><td>79123.0274</td></tr> </table>			2016	1	7436	7436	2	6871	6871	3	6381	6381	4	6642	6642	5	5116	5116	6	9595.4671	9595.4671	7	2822	2822	8	3847	3847	9	10098.5603	10098.5603	10	7707	7707	11	3083	3083	12	9524	9524		79123.0274	79123.0274
		2016																																									
1	7436	7436																																									
2	6871	6871																																									
3	6381	6381																																									
4	6642	6642																																									
5	5116	5116																																									
6	9595.4671	9595.4671																																									
7	2822	2822																																									
8	3847	3847																																									
9	10098.5603	10098.5603																																									
10	7707	7707																																									
11	3083	3083																																									
12	9524	9524																																									
	79123.0274	79123.0274																																									
	<table border="1"> <tr><td></td><td>2016</td></tr> <tr><td>t</td><td>97.59</td></tr> </table>		2016	t	97.59																																						
	2016																																										
t	97.59																																										

3.4.1.4

	42.652
	2 1

3.4.1.6

	389.31
	2 1
:	

3.4.1.7

	2016						
	6						
	<table border="0"> <tr> <td>2242.92t</td> <td>2016</td> </tr> <tr> <td>921.32t</td> <td>846.12t</td> </tr> <tr> <td>8.16%</td> <td>2016</td> </tr> </table>	2242.92t	2016	921.32t	846.12t	8.16%	2016
2242.92t	2016						
921.32t	846.12t						
8.16%	2016						
	<table border="1"> <tr> <td></td> <td>2016</td> </tr> <tr> <td>t</td> <td>3164.24</td> </tr> </table>		2016	t	3164.24		
	2016						
t	3164.24						

3.4.2.1

	26.1
	2 1
:	

3.4.2.2

	93%
	2 1
:	

3.4.2.3

	tC/TJ	
	20.20	98%
	2 1	
:		

3.4.2.4

--	--

	15.3
	2 1
:	

3.4.2.5

	99%
	2 1
:	

3.4.2.6

	0.405
	2 2
:	

3.4.2.7

	0.5257
	2011 2012 2012
:	

3.4.3

3.4.3.1

		t Nm3	GJ/t GJ/ Nm3	tC/T J)	(%)		t CO ₂	t CO ₂
		A	B	C	D	E	$F=A*B*C*D*E/100000$	
2016		55353.61	19.570	26.1	93	44/12	96412.13	110878
		97.59	42.652	20.2	98	44/12	302.14	
		655.06	389.31	15.3	99	44/12	14163.68	

3.4.3.2

		t	CO ₂ t CO ₂ /t	t CO ₂
		A	B	$C=A*B$

2016		3164.24	0.405	1282
------	--	---------	-------	------

3.4.3.3

	MWh	t CO₂ /MWh	t CO₂
	A	B	C=A*B
2016	134354.62	0.5257	70630

3.4.3.4

	2016
tCO ₂ A	110878
tCO ₂ B	1282
tCO ₂ C	70630
tCO ₂ D=A+B+C	182790

3.4.4

2016

CO₂

3.4.2

3.1

3-2

3.4.2

3.4.4.1

3.4.1.1

3.4.4.2

3.4.1.2

3.4.4.3

3.4.1.3

3.4.4.4

3.4.1.4

3.4.4.5

3.4.1.5

3.4.4.6

3.4.1.6

3.4.4.8

3.4.1.8

3.4.4.9

3.4.3.1

3.4.4.8

3.4.3.3

3.4.4.9

	2016
tCO ₂ A	110878
tCO ₂ B	1282
tCO ₂ C	70630
tCO ₂ D=A+B+C	182790

2016

				(
)												
	7583 6968 8	2221	1200	12430 1	85656			128 562						5.7124	18.2789	18.1508

2016

		- -
		- -
		- -

3.5

3.6

4.

- 2016

- 2016

	2016
--	-------------

tCO ₂ A	110878
tCO ₂ B	1282
tCO ₂ C	70630
tCO ₂ D=A+B+C	182790

2016

	tCO ₂	tCO ₂	tCO ₂
2016	110878	70630	181508

-

2016

2015

	t	tCO ₂	tCO ₂
2016	128562	182790	181508
2015	133036	180198	179082

-

2016

5.

1

2

2016

3

1.

2.

3.

4.

5. 2016

6. 2016

7. 2016

8. 2016

9. 2016

10.

11.

12.